

Document No.: Internet/System History Cleaning Studio Help Document

Internet/System History Cleaning Studio

WindowsSupporter Corp.

<http://www.windowssupporter.com>

Pages Order

Getting Started	Pages 3-11
Using Internet/System History Cleaning Studio	Pages 12-16
Company Information	Pages 17
How to Buy	Pages 18-19
Terms	Pages 20-21

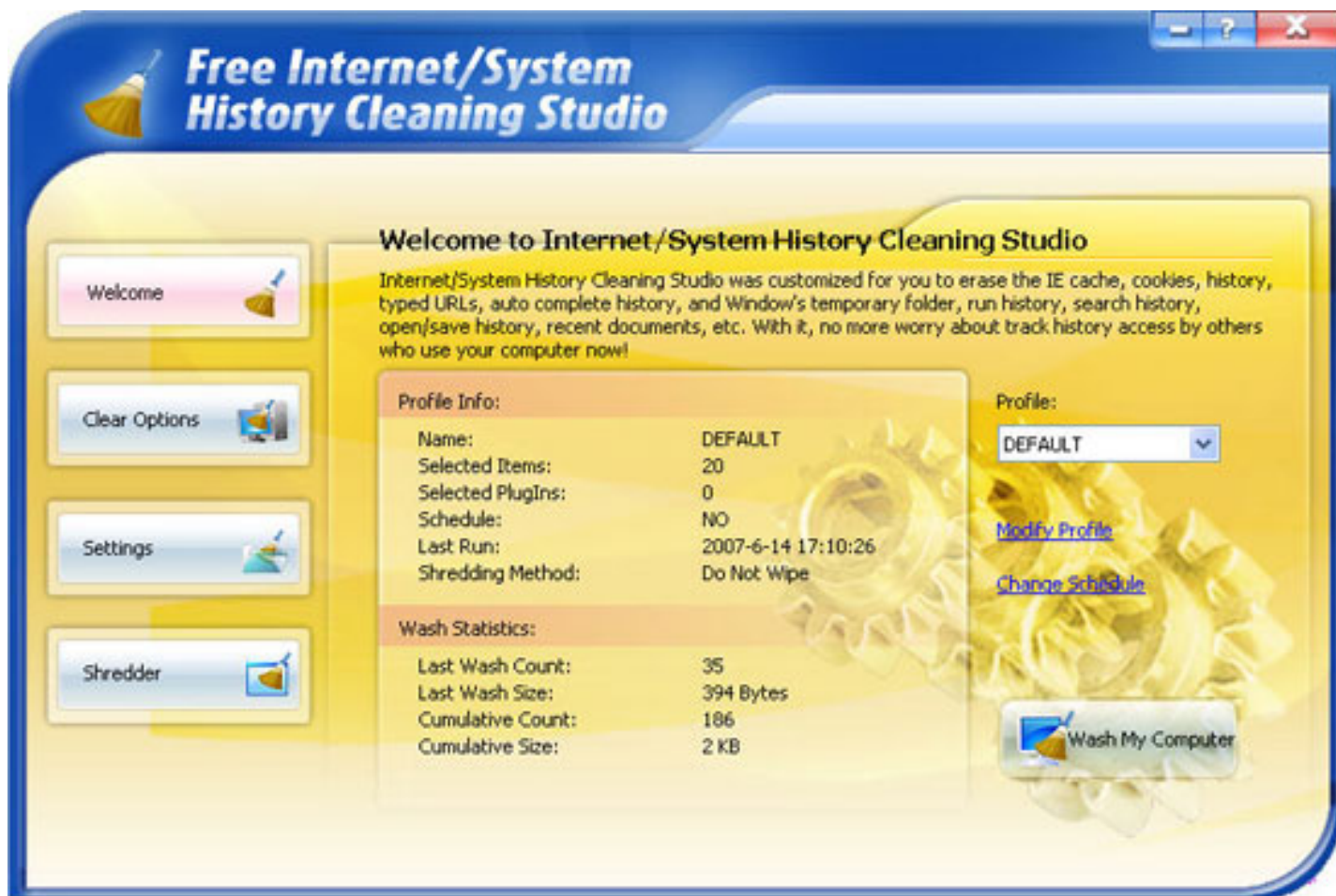
Internet/System History Cleaning Studio

Introduction

Introduction

Your computer stores more information than you think. All over your hard drive is information about the sites you've visited, files you've opened, and people you've e-mailed. **Internet/System History Cleaning Studio** cleans any evidence of your Internet and Windows habits. You can have it run on schedule to automatically clean your system in stealth mode, as well as on Windows start-up and shutdown.

Internet/System History Cleaning Studio was designed to erase the IE cache, cookies, history, typed URLs, auto complete history, and Window's temporary folder, run history, search history, open/save history, recent documents, etc. With it, no more worry about track history access by others who use your computer now!



Features Overview

Protect your Privacy, keep your web surfing private.

Completely clean all traces of online Internet activities on your computer including cache, cookies and history.

Permanently delete recycle bin contents, temporary files, document history, plus many more PC tracks

Erase MS Office or Outlook Express.

Bleach free space and deleted files using Department of Defense standard (DoD 5220.22-M) or make them unrecoverable using regular methods

Plug-ins to clean the history of 100+ third-party programs, including chat, image viewing, P2P applications and more

Support Internet Explorer, Netscape, Mozilla Firefox America Online and Instant Messages

Free space on your Hard Drive

Speed up your computer

And much more!

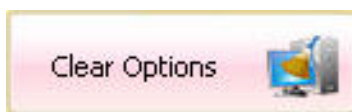
Internet/System History Cleaning Studio

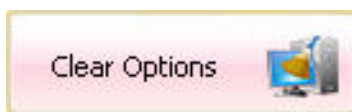
Quick Start

Quick Start

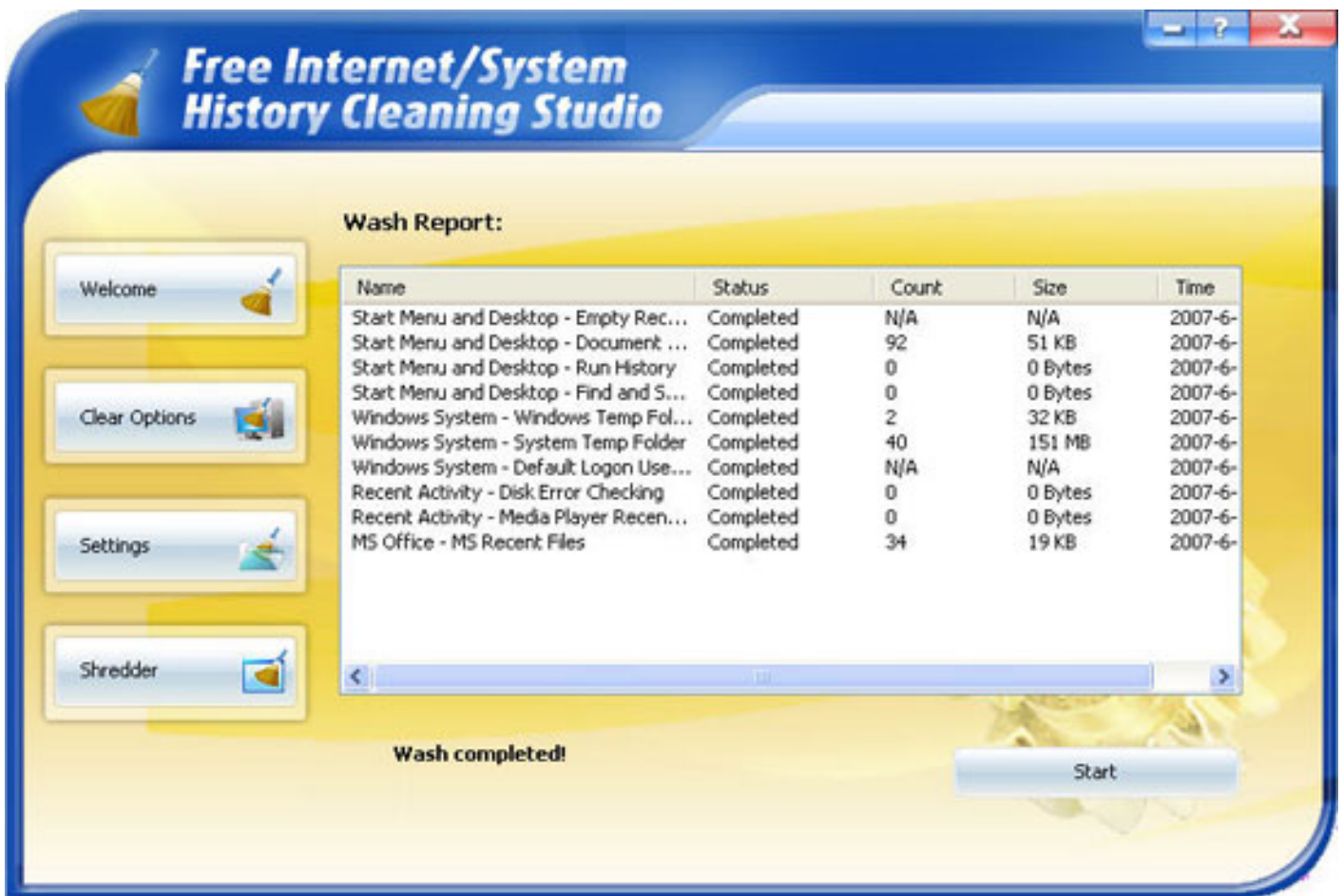
Learn to delete Internet and computer activities here:

1. When the program is started, the System Overview screen appears.



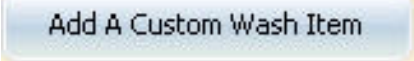
2. Click  in the System Overview Screen to add Profiles and set Profile Automation.

3. The Setting Screen allows you to select which items to delete. To configure settings, check the corresponding boxes. By default, Internet/System History Cleaning Studio performs complete scans. Internet/System History Cleaning Studio will start scanning and for a short while (depending on how big your registry is), then you will see the following screen:



This window indicates that the washing task has been finished.

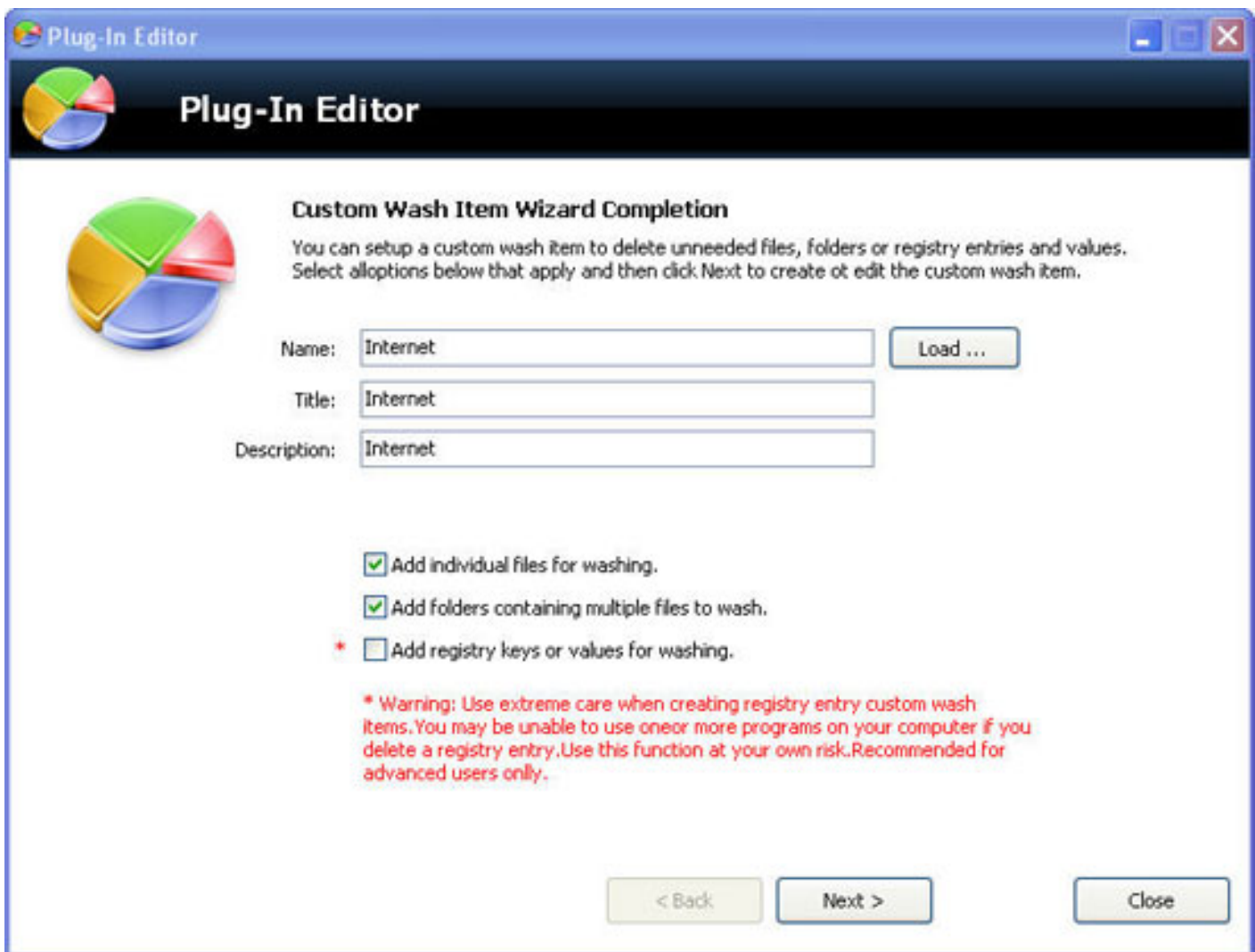
How to Add a Customer wash Item

Click  to add wash items.

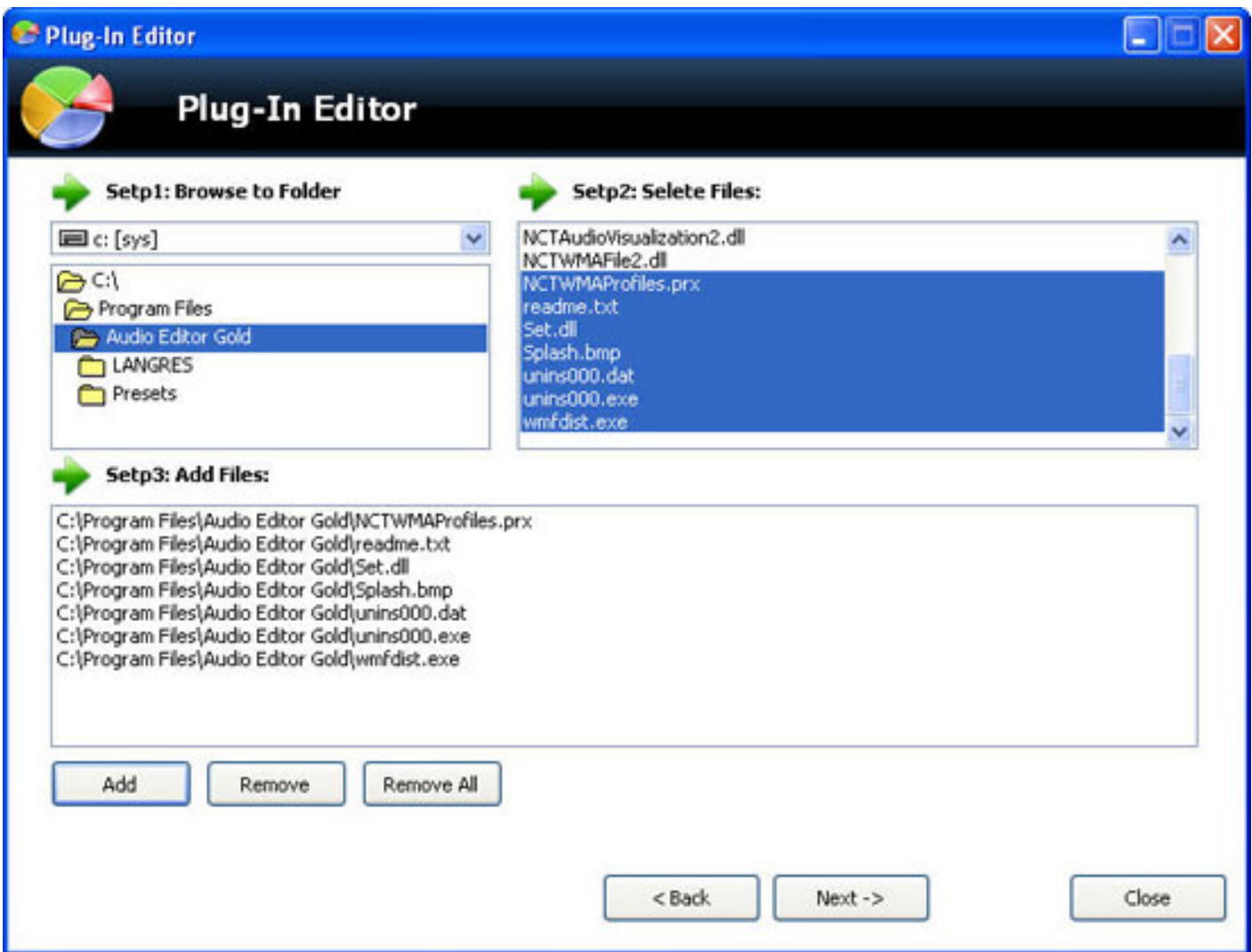
The following steps describe how to add a customer wash item:

Step1: Click the the button "Add A Customer Wash Item"

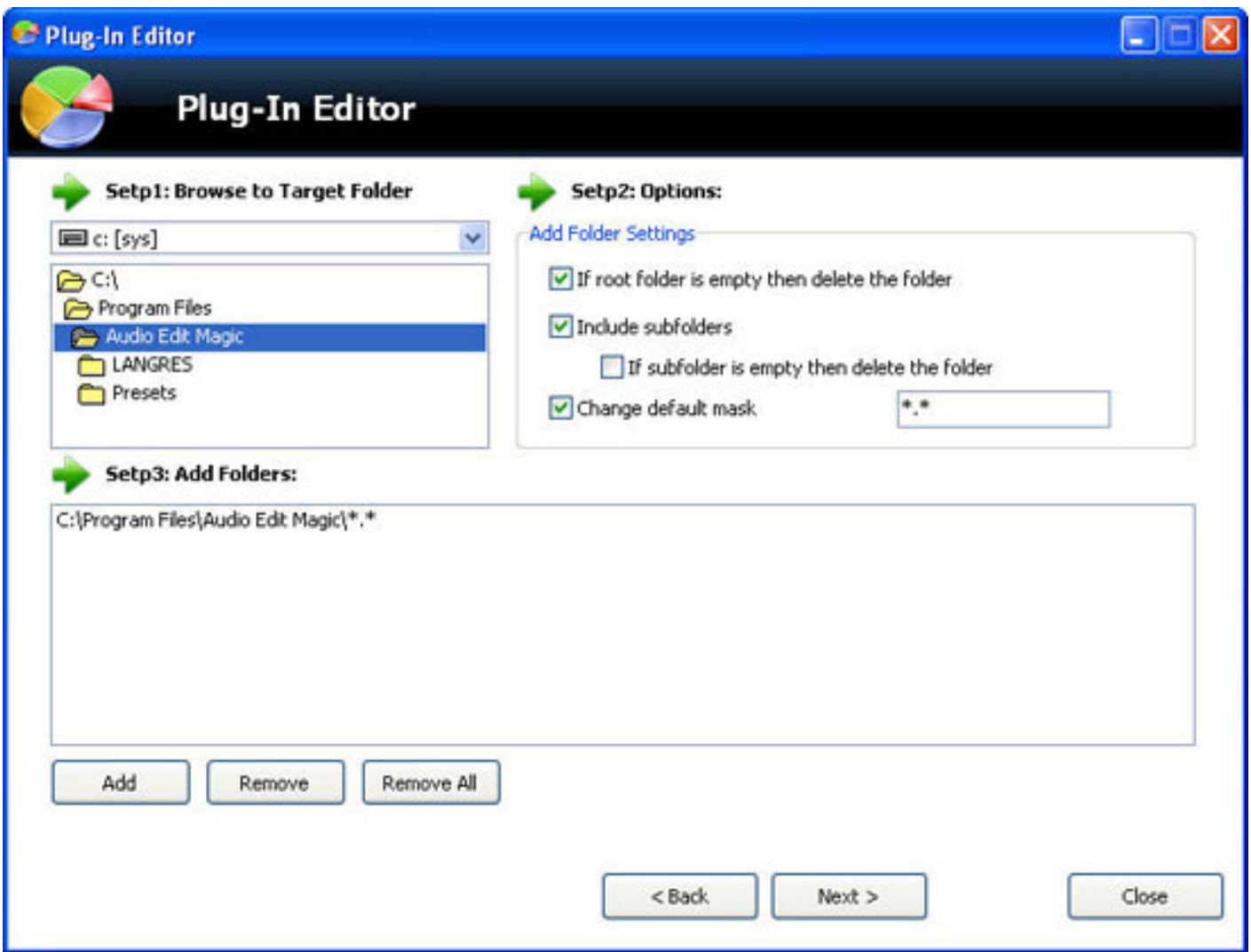
Step2: Create a new Plug-in by typing Name, Title and Description, or open a Plug-in by clicking the "Load..." button and then "Next".



Step3: To delete files, double click a folder (Step 1) and select files to be deleted (Step 2). Selected files will appear in the show window (Step 3). Click "Remove All" to delete selected files.



Step4: To delete a folder, double click the folder (Step 1), select delete options (Step 2) and it will be added in the show window (Step 3). Click the "Remove All" button to delete the selected folder.



Step5: Click "Create" to save your settings and complete the process.



Plug-In Editor



Finished!

You have now completed the configuration of your custom wash item. Click the "Create" button to save your configuration and complete the process.

If you would like to change the description of your custom wash item, please do so at this before you click Create button.

Custom Wash Item Contains:

7Files to Wash

0Folders to Wash

Registry Keys and Values to Wash

< Back

Create

Close

Configuring Internet/System History Cleaning Studio

Internet/System History Cleaning Studio may be configured to reflect your personal preferences.

To configure Internet/System History Cleaning Studio, click on the Settings Tab in the Navigation Panel.



To change the settings simply check box next to the particular preference.

Those options allow you to eliminate the traces in Windows and Internet. Click the specific check box to select options which you'd like to wash.

Or you are able to custom wash items by click

Add A Custom Wash Item



Once the combination of preferences are selected, click on

Internet/System History Cleaning Studio

The user interface (Overview)

The user interface (Overview)



Overview: When Internet/System History Cleaning Studio starts, the System Overview screen appears.

Navigation Panel: Includes tabs of Welcome, Clear Options, Settings and Shredder. To navigate from one screen to the other, you need to click on those tabs.

Main Area: Contains the System Overview or a report showing summary details of:

- Profile Name
- Selected Items
- Selected Plug-Ins
- Shredding Method
- Wash Statistics

Profile Drop List: Select Profiles in the drop list.

Modify Profile: Guides you to the Clear Option Window.

Change Schedule: Guides you to the Shredder Window.

Clear Option

In the Clear Option Screen, add Profiles and set Profile Automation:




Click the button "New", "Rename" and "Delete" to correspond to its functions of Profile. This Profile will be displayed in the Profile drop list on the Welcome Window.

The Profile Automation check box allows you to run Internet/System History Cleaning Studio at specific time or on a specific event.

Shredder



Click  to select shredding preferences. To change the settings, simply check the box next to a desired preference




Settings:

Load Window Washer at windows startup: launches Internet/System History Cleaning Studio as a service upon boot-up.

Minimize Windows Washer after a wash: launch Internet/System History Cleaning Studio to run in the background.

Password-Protect Window Washer settings: check the box to set a password, so other person could not use this application.

Question Icon

The Question Icon  shows other information about Internet/System History Cleaning Studio. Click this icon to see the following window:



Help Content: Guides you to the help file.

Quick Start: Guides you to the "The user interface (Overview)" page in the help file.

Languages: Select English.

Register: Guides you to the registration window.

Enter Serial Number: Enter the registration key to replace the trial version with full version.

Online Resources: Links to Windows Supporter Website.

Contact Technical Support: Contact our Support Team.

About: Displays information of this software.

About Windows Supporter

Be the top Guard of Windows!

Being a shareware developer of Windows Operating System solutions, Windows Supporter take the lead in this domain. We have professional experience in the execution of our philosophy - Think as A Customer. This gives us the idea to create reliable and simple-in-use software products for you.

With sleek, clear interfaces, Windows Supporter R&D Center creates simple solutions to complicated problems.

Contact Us

For Customers

Email:

English: support@windowssupporter.com

French: support_fr@windowssupporter.com

German: support_de@windowssupporter.com

Internet/System History Cleaning Studio

Product ID: 300159569



We always do our best to answer your question!

For Partners

North America:

sales@windowssupporter.com

We benefit together with our partners in a win-win model - the Windows Supporter Business Model, and we love to talk about our creations with you.



<http://www.windowssupporter.com>

How to buy Internet/System History Cleaning Studio

As soon as you make your order, our resellers will verify it. Your order will most likely be processed within 1 hour, but in some VERY rare cases it may take resellers more than 24 hours to process your payment.

The registration key will be automatically generated at our server and e-mailed to you immediately after we receive payment confirmation from our e-commerce reseller.

Please do not worry if you haven't received the registration information right away. Delays usually occur due to the high security settings of spam filters used by our clients. Our message may be rejected as a spam message by the mail service you use.

If you haven't got the registration message within several hours, feel free to contact our [Support Team](#) via email.

If you have any questions concerning our software, send e-mail to: support@windowssupporter.com. **We always do our best to help you!**



Buy Now

Why Internet/System History Cleaning Studio?

Save Time

- It is outstanding in **speed**.
- The **easy-to-use interface** helps you to catch on to the system quickly.
- According to surveys, it saves **20%** time in scanning.

Save Money

- It is your **one-way ticket** to eliminating the traces on your computer.
- 30-day money-back guarantee** if you are not satisfied with it!

All in one tool

Ensure all traces of your Internet and computer activities are permanently deleted and unrecoverable on your PC.

Easy-to-use

Whether you are an experienced user or a beginner, the software will make the task of optimizing your system a breeze!

What will you have after purchase?

Full version of Internet/System History Cleaning Studio

Fun in unlimited system optimizing.

Free update(Major Update Not Included)

Customer care

We are pleased to offer our care to meet your needs. We promise our customers, any customer questions will be replied within 1 business day!

Coupons for Windows Supporter products in Discount Center

Great benefits for customers.

Is my order secure?

As we have for years, we promise the most secure purchase.

[ShareIt](#) and [RegNow](#), all these Windows Supporter partners passed strict certification. We truly believe in 'Only by benefiting our customer can benefit ourselves'. So your purchase security in Windows Supporter our top priority! Windows Supporter has been involved in E-commerce for years. And through these years, we built up a secure online shopping system. You can enjoy the speed and convenience we specially offer.

Glossary of Terms

ActiveX

An ActiveX control is essentially a simple OLE object that supports a variety of interfaces. ActiveX Controls have become the primary architecture for developing programmable software components for use in a variety of different containers, ranging from software development tools to end-user productivity tools. ActiveX controls register themselves in the Windows Registry.

Application

Applications are programs that are designed for end users such as word processors, spreadsheets, Customer Relationship Management and database software.

Backup

The procedure that allows you to store your data on a separate storage medium so that you can reproduce the data with 100% accuracy if and when data loss takes place.

COM

Microsoft defines COM or Component Object Model as "a platform-independent, distributed, object-oriented system for creating binary software components that can interact. COM is the foundation technology for Microsoft's OLE (compound documents), ActiveX® (Internet-enabled components), as well as others".

Custom Controls

A custom control is subsequently a control that is non-standard to Windows or proprietary to the application that is being installed. An example, in a car racing game, a custom control would be the speedometer. It is not a native Windows control but is required by the application (car racing game).

File Associations

A file association allows you to control certain aspects of how the Shell's treats different file types.

File Extensions

In such operating systems as Windows, one or several letters (generally three) at the end of a filename. Filename extensions usually follow a period (dot) and indicate the type of information stored in the file. Common file extensions include pdf, .exe, .gif, .jpg, .tif, .mp3, .avi, .doc, .xls, and .zip.

File System

A system for organizing directories and files, generally in terms of how it is implemented in the disk operating system.

Objects

An object is a software bundle of variable items of data (state) and related behaviors implemented through methods. A method is function (subroutine) associated with an object. For example, an event is a common object used in window systems to represent the action of a user pressing a mouse button or a key on the keyboard.

Processes

While the term "program" refers to an executable code (the exe file for MS Word, for example), a process is a program that is being executed. When you start a program in Windows, the executable will be loaded into RAM. Windows will then add the new process to its internal process list and make sure the process receives some CPU time as well as memory and other resources.

Restore

The process of reinstating a set of data to its original state before the data loss or related incident has occurred.

Shell

The Windows user interface gives you access to a wide variety of objects necessary for running applications and managing the operating system. The most numerous and familiar of these objects are the folders and files that reside your hard drive. There are also a number of virtual objects that allow the user to do tasks, such as send files to remote printers or access the Recycle Bin. The Shell organizes these objects into a hierarchical structure and provides users and applications with a consistent and efficient way to access and manage various objects. Users interact with the hierarchy (or namespace) through the Shell's graphical UI or through an application.

Shell Namespace

The Shell namespace organizes the file system and all objects managed by the Shell into a single tree-structured hierarchy. Think of it as a larger and more inclusive version of the file system.

Shortcuts

Special types of files that contain preset links to various single files, folders and devices. Windows has a series of shortcuts placed on the computer desktop to allow access to files and devices at one click of a button.

User Interface

The menu and general instruments available for the user to communicate with the program. In Internet/System History Cleaning Studio the user interface is designed to be highly intuitive and exceptionally simple to use.

Virtual Devices

Virtual devices are also referred to as a virtual peripheral - a virtual device mimics a physical hardware device, essentially, "tricking" your system into believing that a device exists when actually it does not. For example, fax software can act as a virtual printer. When want to send a document to your fax modem, you would print it "normally" to the fax/modem (virtual printer) device, which then sends information to another fax / modem or fax machine instead of your printer actually printing the file.